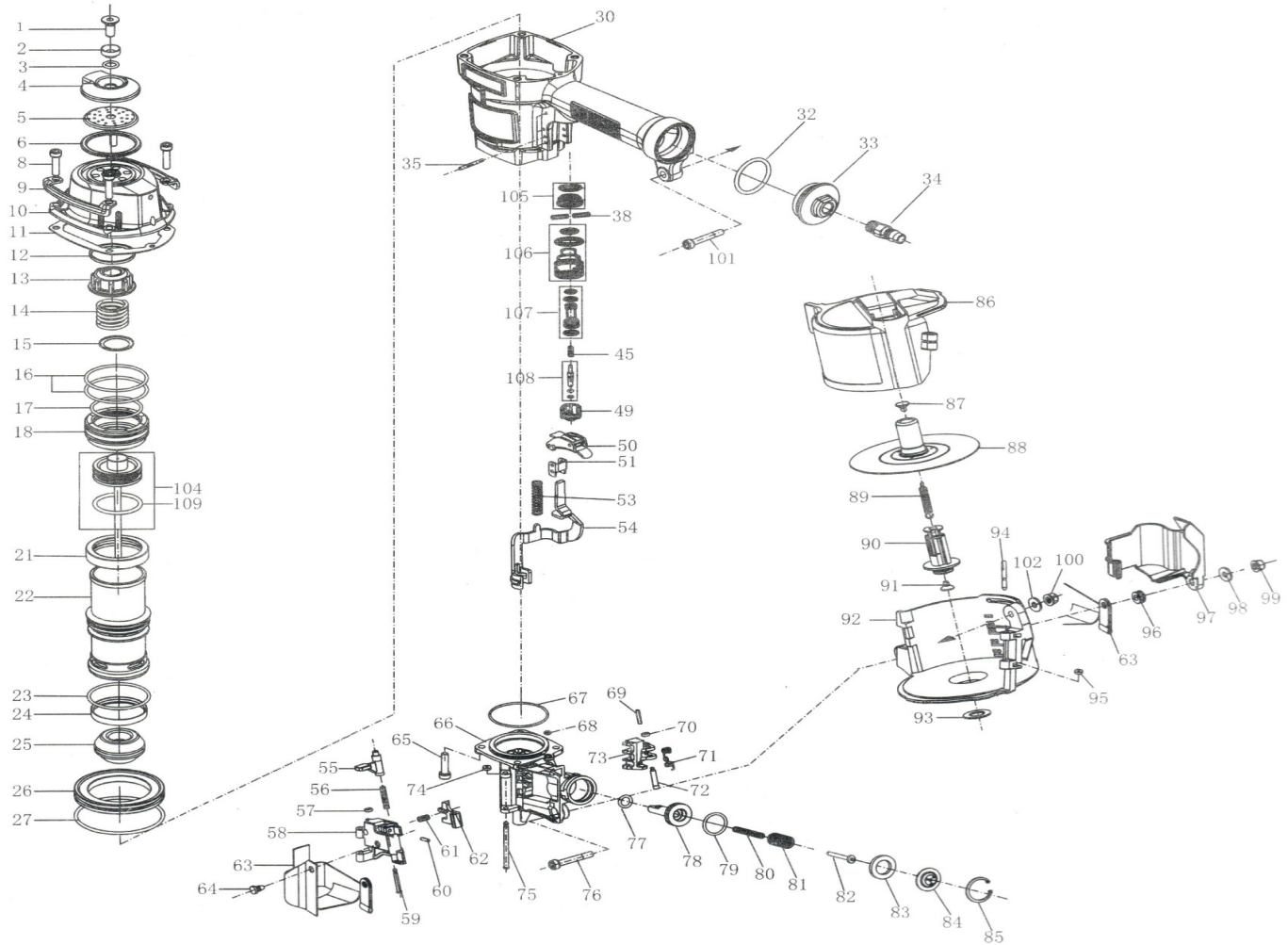


PREGADOR PNEUMÁTICO GRAMPAC CN55



Aplicar a trava rosca loctite 242

1	CN5501IMP	PARAFUSO (CN5501IMP)	45	CN5545IMP	MOLA (CN5545IMP)	79	CN5579IMP	O RING (CN5579IMP)
2	CN5502IMP	CALCO DEFLETOR (CN5502IMP)	49	CN5549IMP	TAMPA DA VALVULA (CN5549IMP)	80	CN5580IMP	MOLA (CN5580IMP)
3	CN5503IMP	O RING (CN5503IMP)	50	CN5550IMP	CONJUNTO GATILHO (CN5550IMP)	81	CN5581IMP	MOLA (CN5581IMP)
4	CN5504IMP	DEFLETOR (CN5504IMP)	51	CN5551IMP	CONTATO GATILHO (CN5551IMP)	82	CN5582IMP	PINO DA MOLA (CN5582IMP)
5	CN5505IMP	SILENCIADOR (CN5505IMP)	53	CN5553IMP	MOLA (CN5553IMP)	83	CN5583IMP	BATENTE (CN5583IMP)
6	CN5506IMP	CALCO DO SILENCIADOR (CN5506IMP)	54	CN5554IMP	TRAVA DE SEGURANCA (CN5554IMP)	84	CN5584IMP	CHAPEU (CN5584IMP)
8	CN5508IMP	PARAFUSO (CN5508IMP)	55	CN5555IMP	TRAVA DO MANCAL (CN5555IMP)	85	CN5585IMP	ANEL DE RETENCAO (CN5585IMP)
9	CN5509IMP	PROTECTOR (CN5509IMP)	56	CN5556IMP	MOLA (CN5556IMP)	86	CN5586IMP	TAMPA DO MAGAZINE (CN5586IMP)
10	CN5510IMP	TAMPA (CN5510IMP)	57	CN5557IMP	O RING (CN5557IMP)	87	CN5587IMP	RECEPTOR DA MOLA (CN5587IMP)
11	CN5511IMP	JUNTA DA TAMPA (CN5511IMP)	58	CN5558IMP	TAMPA DO MANCAL (CN5558IMP)	88	CN5588IMP	DISCO (CN5588IMP)
12	CN5512IMP	ANEL DE METAL (CN5512IMP)	59	CN5559IMP	PINO DO SUPORTE (CN5559IMP)	89	CN5589IMP	MOLA (CN5589IMP)
13	CN5513IMP	AMORTECEDOR DE EXAUSTAO (CN5513IMP)	60	CN5560IMP	PINO DA TRAVA (CN5560IMP)	90	CN5590IMP	REGULADOR (CN5590IMP)
14	CN5514IMP	MOLA (CN5514IMP)	61	CN5561IMP	MOLA (CN5561IMP)	91	CN5591IMP	RECEPTOR DA MOLA (CN5591IMP)
15	CN5515IMP	ARRUELA DA MOLA (CN5515IMP)	62	CN5562IMP	SUPORTE (CN5562IMP)	92	CN5592IMP	MAGAZINE (CN5592IMP)
16	CN5516IMP	O RING (CN5516IMP)	64	CN5564IMP	REBITE DE PROTECAO (CN5564IMP)	93	CN5593IMP	ANEL DE PU (CN5593IMP)
17	CN5517IMP	O RING (CN5517IMP)	65	CN5565IMP	PARAFUSO (CN5565IMP)	94	CN5594IMP	PINO DO MAGAZINE (CN5594IMP)
18	CN5518IMP	VALVULA (CN5518IMP)	66	CN5566IMP	MANCAL (CN5566IMP)	95	CN5595IMP	O RING (CN5595IMP)
21	CN5521IMP	SELO DE VALVULA (CN5521IMP)	67	CN5567IMP	O RING (CN5567IMP)	96	CN5596IMP	CALCO (CN5596IMP)
22	CN5522IMP	CILINDRO (CN5522IMP)	68	CN5568IMP	O RING (CN5568IMP)	97	CN5597IMP	PROTECTOR DO BICO (CN5597IMP)
23	CN5523IMP	O RING (CN5523IMP)	69	CN5569IMP	PINO ELASTICO (CN5569IMP)	98	CN5598IMP	ARRUELA (CN5598IMP)
24	CN5524IMP	VEDANTE DO CILINDRO (CN5524IMP)	70	CN5570IMP	O RING (CN5570IMP)	99	CN5599IMP	PORCA (CN5599IMP)
25	CN5525IMP	AMORTECEDOR (CN5525IMP)	71	CN5571IMP	MOLA DO ALIMENTADOR (CN5571IMP)	100	CN55100IMP	PORCA (CN55100IMP)
26	CN5526IMP	COLAR DO CILINDRO (CN5526IMP)	72	CN5572IMP	PINO DO ALIMENTADOR (CN5572IMP)	101	CN55101IMP	PARAFUSO (CN55101IMP)
27	CN5527IMP	O RING (CN5527IMP)	73	CN5573IMP	ALIMENTADOR (CN5573IMP)	102	CN55102IMP	ARRUELA (CN55102IMP)
30	CN5530IMP	CORPO (CN5530IMP)	74	CN5574IMP	O RING (CN5574IMP)	104	CN55104IMP	CONJUNTO PISTAO MARTELO C/ANEL (CN55104IMP)
32	CN5532IMP	O RING (CN5532IMP)	75	CN5575IMP	PINO DA TAMPA (CN5575IMP)	105	CN55105IMP	CHAPEU DA VALVULA C/ANEL (CN55105IMP)
33	CN5533IMP	NIPEL (CN5533IMP)	76	CN5576IMP	PARAFUSO (CN5576IMP)	106	CN55106IMP	CAPA DA VALVULA (CN55106IMP)
35	CN5535IMP	PINO ELASTICO (CN5535IMP)	77	CN5577IMP	O RING (CN5577IMP)	107	CN55107IMP	VALVULA COM ANEL (CN55107IMP)
38	CN5538IMP	PINO (CN5538IMP)	78	CN5578IMP	PISTAO DO ALIMENTADOR (CN5578IMP)	108	CN55108IMP	PINO DA VALV. C/ANEL (CN55108IMP)
						109	CN55109IMP	ANEL DO PISTAO (CN55109IMP)

Versão: 02.23

DOCUMENTO SUJEITO À ALTERAÇÕES SEM PRÉVIO AVISO

